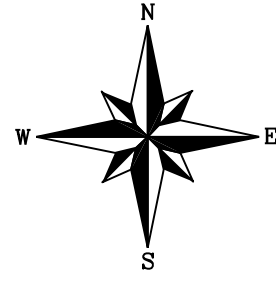


EMERALD PARK EAST
WHITE CITY ADDITION PHASE IV

PLAN SHOWING
PROPOSED SUBDIVISION

OF PART OF
 BLOCK G, REG'D PLAN NO. 98RA29307
 in SEC. 14, TWP. 17, RGE. 18, W.2M. &
 part of the S.E. & N.E. 1/4 SEC. 14, TWP. 17, RGE. 18, W.2M.
WHITE CITY, SASKATCHEWAN

SCALE 1:2000



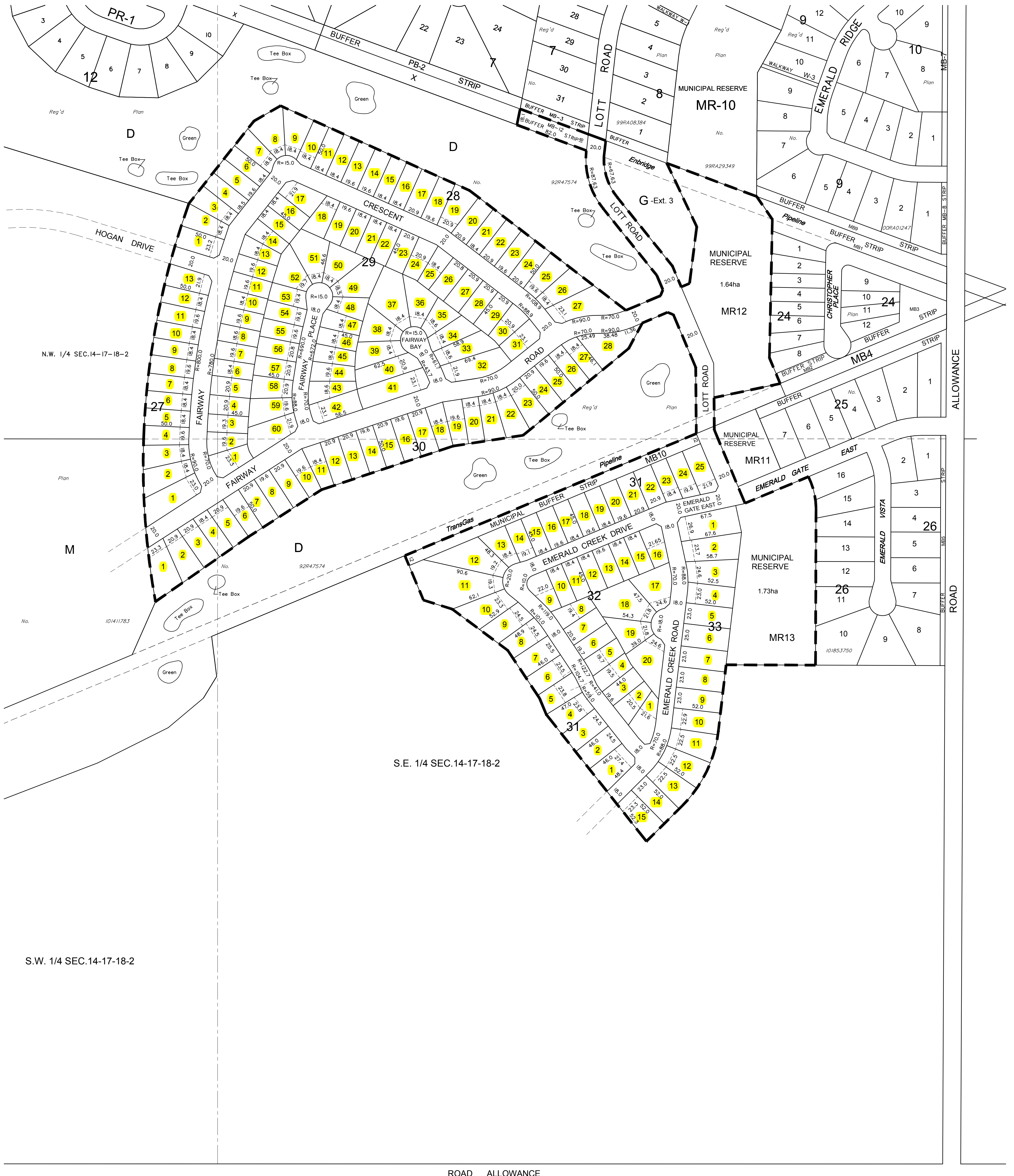
NOTE:

- Measurements are in metres and decimals thereof.
- Area to be approved is outlined by a bold dashed line and contains 30.53 ha.
- Setbacks shown are at 10m and 22m.
- Corner cutoffs are 5.0 metres.
- Some measurements are approximate and may differ from the final Plan of Survey by as much as 1 %.

December 8, 2006
 Date
 Revised Jan. 29, 2007

Saskatchewan Land Surveyor

OWNER:
 GREAT PLAINS LEASEHOLDS LTD.



ROAD ALLOWANCE